

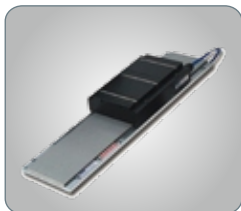
H3000M



Printer Model	H3000M	
Print head Category	Ricoh Gen6(5PL)	Kyocera(4PL)
Printing Size	3200x2000mm	
UV Lamp	UV LED light	
Rip Software	Photoprint/Onyx	Onyx/Caldera
Media Thickness	1-100mm	
Print Head NO.	2-16pcs	2-8pcs
Ink Color	CMYK/LC/LM+W+V	CMYK/LC/LM+W
Resolution	635*600dpi	604*900dpi
	635*900dpi	604*1200dpi
	635*1200dpi	604*1800dpi
Ink Tank Volume	2L	
Image Format	TIFF, JPEG, POSTSCRIPT, EPS, PDF	
Printing Speed	4PASS (2Row speed) 50sqm/h	High speed(2Row speed) 114sqm/h
	6PASS (2Row speed) 36sqm/h	Production(2Row speed) 74sqm/h
	8PASS (2 Row speed) 32sqm/h	Quality(2 Row speed) 55sqm/h
Power Supply	AC 220V,50/60HZ >30A	
Enviroment	Temperature 20-28°C	
	Humidity 40-60%	
Machine Size	5550*2980*1580mm	
Machine Weight	2350kg	
Outdoor Shelf Life	2Year (use Quantum Ink)	
Warranty Time	One year	

Technical specifications, designs are subject to change without prior notice.

Maglev Drive



Linear motor driving increasing 10% of carriage moving when acceleration and deceleration.

High Precision



X Axial equipped with 1 µm metal raster, gives a high precisely ink drops control. Makes only 1 micro tolerance on Bi-direction printing.

Quiet Movement



Japan THK mute guiderail makes smooth movement and low noise come true.

Perfect Curing



High energy LED lamp for better curing on almost all kind of material.

Stable Pressure



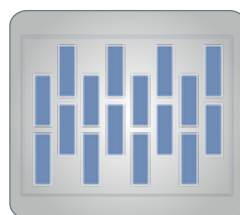
Big negative air tank provide a stable negative pressure supply.

Easy Media unloading



A pedal switch, control reverse air blowing, makes easy media unloading.

Multiple Color Layout



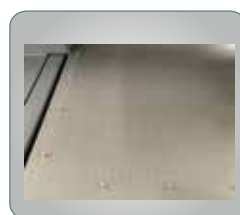
Ricoh G6 Max 6 heads.
Kyocera Max 8 heads.

Strong Power



Two vacuum pump for independent working zone control, enhance the fixation power.

Operation Friendly



Registration pin and ruler for material registration.

Pre-Heating System



Ink subtank individual heating to ensure perfect ink viscosity.